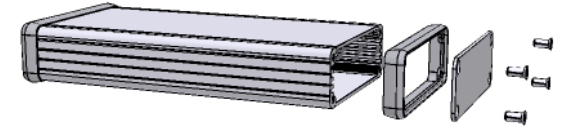
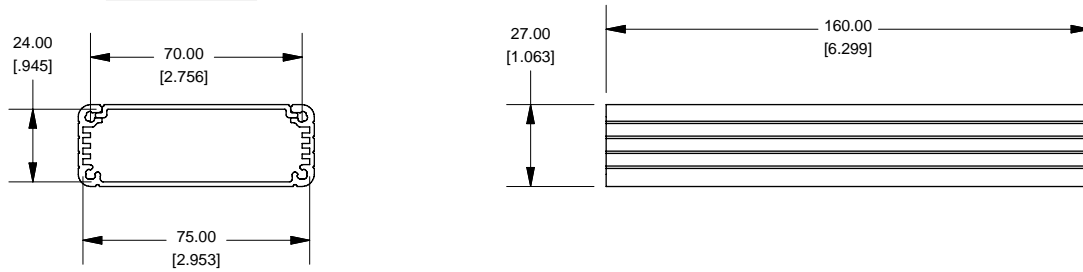
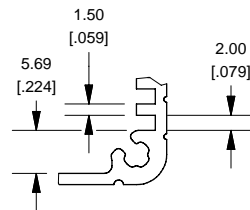


Extrusion

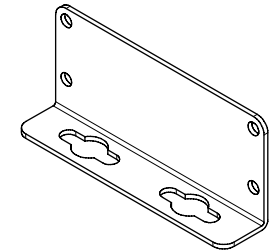
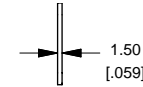
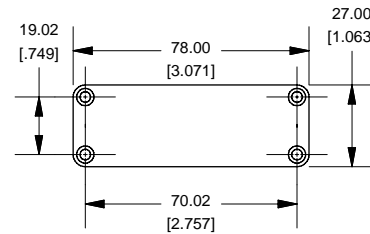


EXTRUSION DESIGNED FOR 75MM WIDE PC BOARD

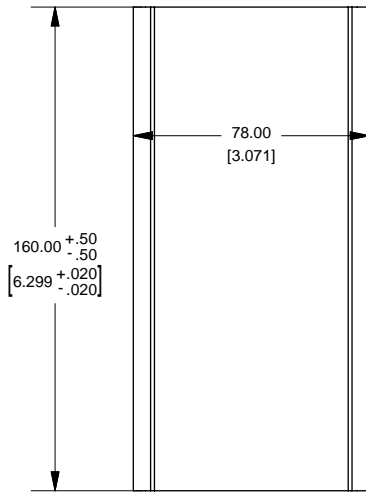
Slot Details



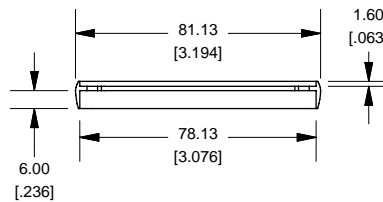
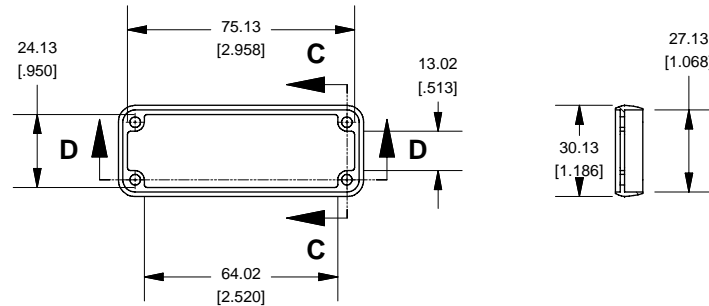
End Plate



OPTIONAL FLANGE END PANELS 1455JF



Open Bezel



NOTE	
Purchased assembly includes box, plastic bezels, end panels, #6 Taptight screws and self adhesive rubber feet.	
Box made from Extruded Aluminum 6063.	
Bezels made with polycarbonate.	

1455J1601	
PART NUMBERS	
Clear Anodized	1455J1601
Black Anodized	1455J1601BK
ACCESSORIES	
See website for accessories.	

**HAMMOND
MANUFACTURING™**

1455J1601

www.hammondmfg.com

Enclosures can be Factory Modified (Milling, Drilling, Printing etc.)
Solid models of this enclosure available in STEP or IGES.
Contact Factory mjm@hammondmfg.com